

MACRO MONITOR

		Latest four months				Year		
		May-08	Jun-08	Jul-08	Aug-08	2005	2006	2007
EXCHANGE RATES (BI-middle rate, period end)								
US\$	Rp/US\$	9,318	9,225	9,118	9,153	9,830	9,020	9,419
100 Yen	Rp/Yen	8,827	8,672	8,445	8,390	8,342	7,580	8,306
Sin	Rp/Sin	6,822	6,780	6,665	6,460	5,907	5,879	6,502
Euro	Rp/Euro	14,386	14,563	14,212	13,495	11,660	11,858	13,760
Pound	Rp/Pound	18,410	18,397	18,057	16,765	16,947	17,697	18,804
FX Rate to US\$1 (Tax Dept rate)	Rp/US\$	9,308	9,237	9,141	9,169	9,844	9,096	9,403
INTEREST RATES - end period								
12 month deposit	%	5.44	5.62	5.86	6.43	9.91	7.95	6.10
3 month deposit	%	5.58	5.60	5.78	6.13	9.59	8.00	6.10
SBI 1 month	%	8.25	8.50	8.75	9.00	12.75	9.75	8.00
INTERNATIONAL RESERVES								
	US\$ Billion	57.46	59.45	60.56	58.36	34.72	42.59	57.04
GDP CONSTANT 2000 PRICES								
	Quarterly	Q3/07	Q4/07	Q1/08	Q2/08	2005	2006	2007
GDP Growth (% - year on year)	% YOY	6.5	6.3	6.3	6.4	5.7	5.5	6.3
Private Consumption	% YOY	5.1	5.6	5.7	5.3	4.0	3.2	5.0
Government Consumption	% YOY	6.5	2.0	4.7	2.2	6.6	9.6	3.9
Gross Fixed Cap Formation	% YOY	10.4	12.1	15.4	12.8	10.9	2.5	9.2
Exports of Goods and Services	% YOY	6.9	7.3	15.5	16.1	16.6	9.4	8.0
Imports of Goods and Services	% YOY	7.0	13.6	17.8	16.7	17.8	8.6	8.9
Direct Investment Realization								
	Quarterly	Q3/07	Q4/07	Q1/08	Q2/08	2005	2006	2007
Domestic Investment	US\$ Billion	0.5	0.2	0.5	0.4	3.2	2.3	3.8
Foreign Investment	US\$ Billion	4.4	1.8	7.9	2.5	8.9	6.0	10.3
BANK CREDITS								
	Rp Trn	Mar-08	Apr-08	May-08	Jun-08	2005	2006	2007
Agriculture		1,029.2	1,054.7	1,089.3	1,142.1	689.7	787.1	995.1
Mining		56.1	57.1	58.3	59.8	36.7	45.0	55.9
Manufacturing industry		27.6	26.5	26.3	29.2	7.9	13.9	25.3
Trade		211.6	216.3	223.3	232.3	169.7	182.4	203.8
Services		212.5	218.7	227.4	240.3	134.1	162.4	215.7
Others		223.2	230.5	238.2	252.9	134.9	157.6	212.4
		298.1	305.6	315.8	327.6	206.4	225.8	281.9
BANK DEPOSITS								
	Rp Trn	1,482.8	1,495.6	1,521.3	1,570.2	1,134.1	1,298.8	1,528.2
State Banks		527.8	532.0	535.8	568.7	429.7	483.3	578.0
Regional Government Bank		141.5	141.4	149.3	144.8	85.6	129.6	134.9
Private National Banks		636.4	645.7	654.6	673.2	485.5	551.7	640.1
Foreign & Joint Banks		177.1	176.5	181.6	183.6	133.4	134.2	175.1
JAKARTA STOCK INDICES (JSI)								
		May-08	Jun-08	Jul-08	Aug-08	2005	2006	2007
COMPOSITE	1991 = 100	2,444.4	2,349.1	2,304.5	2,165.9	1,162.6	1,805.5	2,745.8
SECTOR :	1995 = 100							
Agriculture		2,935.8	3,061.1	2,309.0	1,845.5	493.5	1,218.5	2,754.8
Mining		3,388.3	3,416.0	2,995.3	2,577.2	604.6	933.2	3,270.1
Construction, property		184.3	168.5	174.7	164.4	64.1	122.9	251.8
Finance		217.8	203.7	228.2	224.9	131.5	206.6	260.6
Trade		372.0	356.8	316.9	295.3	196.2	275.1	392.2
Basic Industry		217.2	200.0	209.5	196.5	104.2	147.1	238.1
Miscellaneous		388.0	360.6	412.0	386.1	204.7	284.1	477.4
Consumer Goods		414.5	398.3	390.8	396.0	280.8	392.5	436.0
Infrastructure		389.8	652.8	655.3	653.4	472.9	771.6	874.1
LQ-45		518.4	495.2	481.3	449.4	254.4	399.4	599.8

MACRO MONITOR

		Latest four months				Year		
		May-08	Jun-08	Jul-08	Aug-08	2005	2006	2007
WHOLESALE PRICE INDEX	index	235.6	244.9	260.1	264.9	161.91	177.7	216.6
WPI 12 months to date	%	25.4	27.6	35.5	35.5	22.61	9.8	21.9
CONSUMER PRICE INDEX,	2002 = 100	May-08	Jun-08	Jul-08	Aug-08	2005	2006	2007
66 CITIES 1)			1)	1)	1)			
General	index	164.01	110.08	111.59	112.16	136.9	145.9	155.5
CPI Inflation (monthly)	%	1.41	2.46	1.37	0.51	17.11	6.60	6.59
12 months to date	%	10.38	11.03	11.90	11.85	17.11	6.60	6.59
Raw Food	index	172.23	116.44	118.59	119.70	126.6	142.9	159.0
Prepared Food	index	157.57	109.38	110.55	111.20	131.6	139.9	148.9
Housing	index	165.07	108.03	109.97	110.55	141.5	148.3	155.6
Cloth	index	145.82	108.61	109.49	108.91	121.2	129.5	140.4
Education	index	161.78	104.99	106.82	108.27	136.6	147.7	160.7
Health	index	140.02	106.20	106.95	107.55	120.0	127.0	132.5
Transport	index	171.51	109.50	110.28	110.27	165.4	167.1	169.2
Raw Food	Mth % chg	1.72	1.28	1.85	0.94	13.9	12.9	11.3
Prepared Food	Mth % chg	0.86	1.33	1.07	0.59	13.7	6.4	6.4
Housing	Mth % chg	1.58	1.14	1.80	0.53	13.9	4.8	4.9
Cloth	Mth % chg	(0.16)	0.49	0.81	(0.53)	6.9	6.8	8.4
Education	Mth % chg	0.37	0.44	1.74	1.36	8.2	8.1	8.8
Health	Mth % chg	0.69	0.83	0.71	0.56	6.1	5.9	4.3
Transport	Mth % chg	2.23	8.72	0.71	(0.01)	44.8	1.0	1.3
TRADE		Apr-08	May-08	Jun-08	Jul-08	2005	2006	2007
Exports (Oil & Non-Oil)	US\$ Million	10,971	12,888	12,895	12,553	85,660	100,799	114,024
- Exports Oil & Gas	US\$ Million	2,481	3,215	2,980	2,874	19,231	21,209	22,081
Imports (Oil & Non-Oil) 2)	US\$ Million	11,495	11,658	12,023	12,815	57,701	61,065	74,403
- Imports Oil & Gas	US\$ Million	2,827	3,268	3,585	3,573	17,458	18,963	21,880
Trade Balance (Oil & Non-Oil)	US\$ Million	(524)	1,230	872	(262)	27,959	39,734	39,621
Exports (Oil & Non-Oil)	Mth % chg	(7.78)	17.47	0.06	(2.65)	19.7	17.7	13.1
- Exports Oil & Gas	Mth % chg	(10.11)	29.58	(7.29)	(3.55)	22.9	10.3	4.1
Imports (Oil & Non-Oil)	Mth % chg	14.85	1.41	3.13	6.59	24.0	5.8	21.8
- Imports Oil & Gas	Mth % chg	17.34	15.59	9.72	(0.34)	48.8	8.6	15.4
Trade Balance (Oil & Non-Oil)	Mth % chg	(127.78)	334.59	(29.10)	(130.05)	11.6	42.1	(0.3)
FOREIGN TOURIST ARRIVALS	Thn people	459.1	509.0	529.1	567.4	4,074.4	4,006.5	4,541.5
Monthly % change	%	(8.55)	10.85	3.95	7.24	(10.3)	(1.7)	13.4

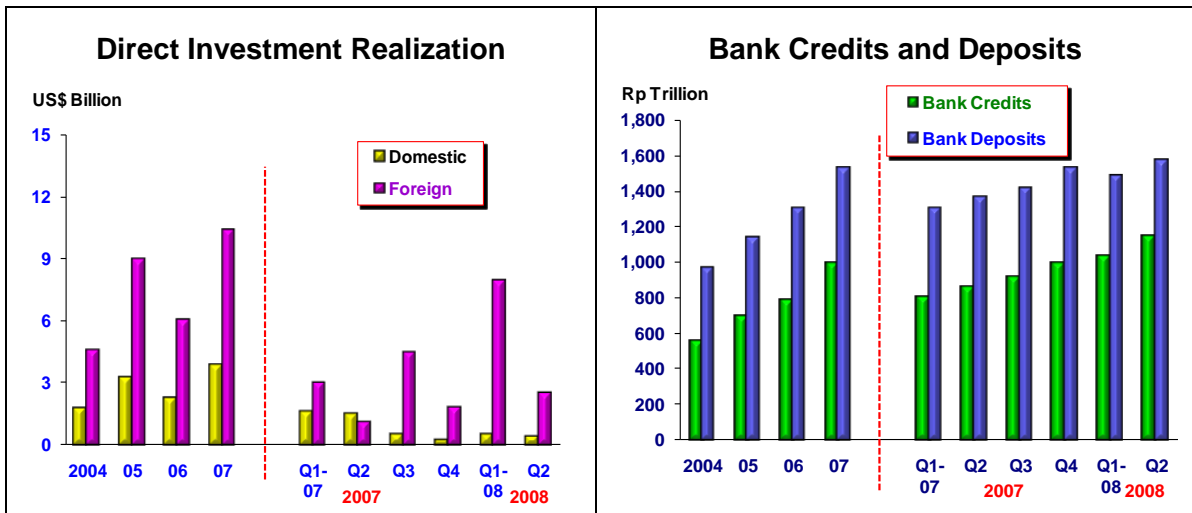
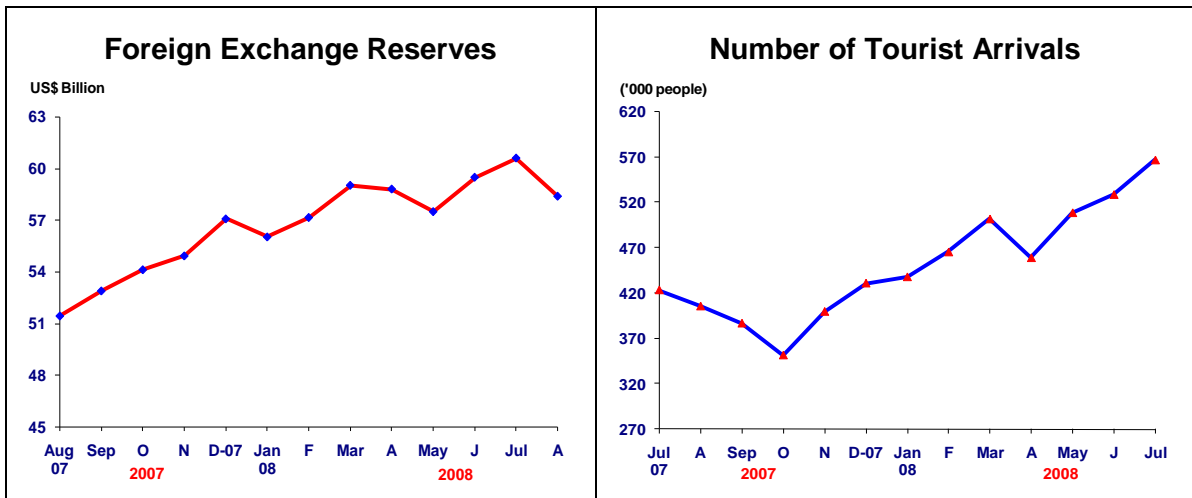
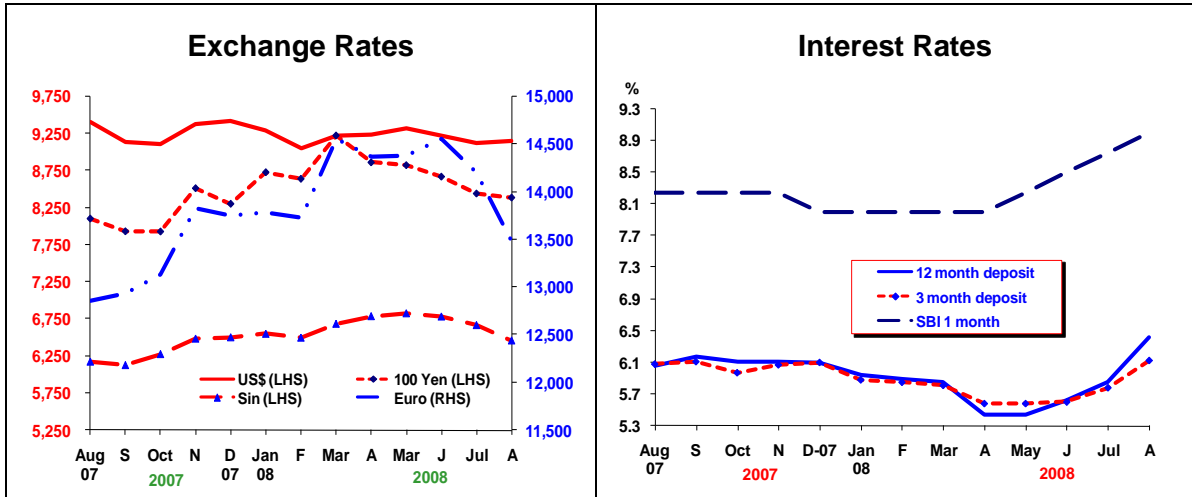
n.a= not available

1) Starting Jun08 using base year 2007=100 & CPI for 66 cities

2) Starting Jan08 using General Trade System

Sources: BI, BPS, BKPM, CastleAsia

MACRO MONITOR



MACRO MONITOR

